



Massachusetts Lifespan Respite Program

Bring, Brag, Borrow

July 2021

Presented by:

Leanne Winchester, Project Director/ Evaluator

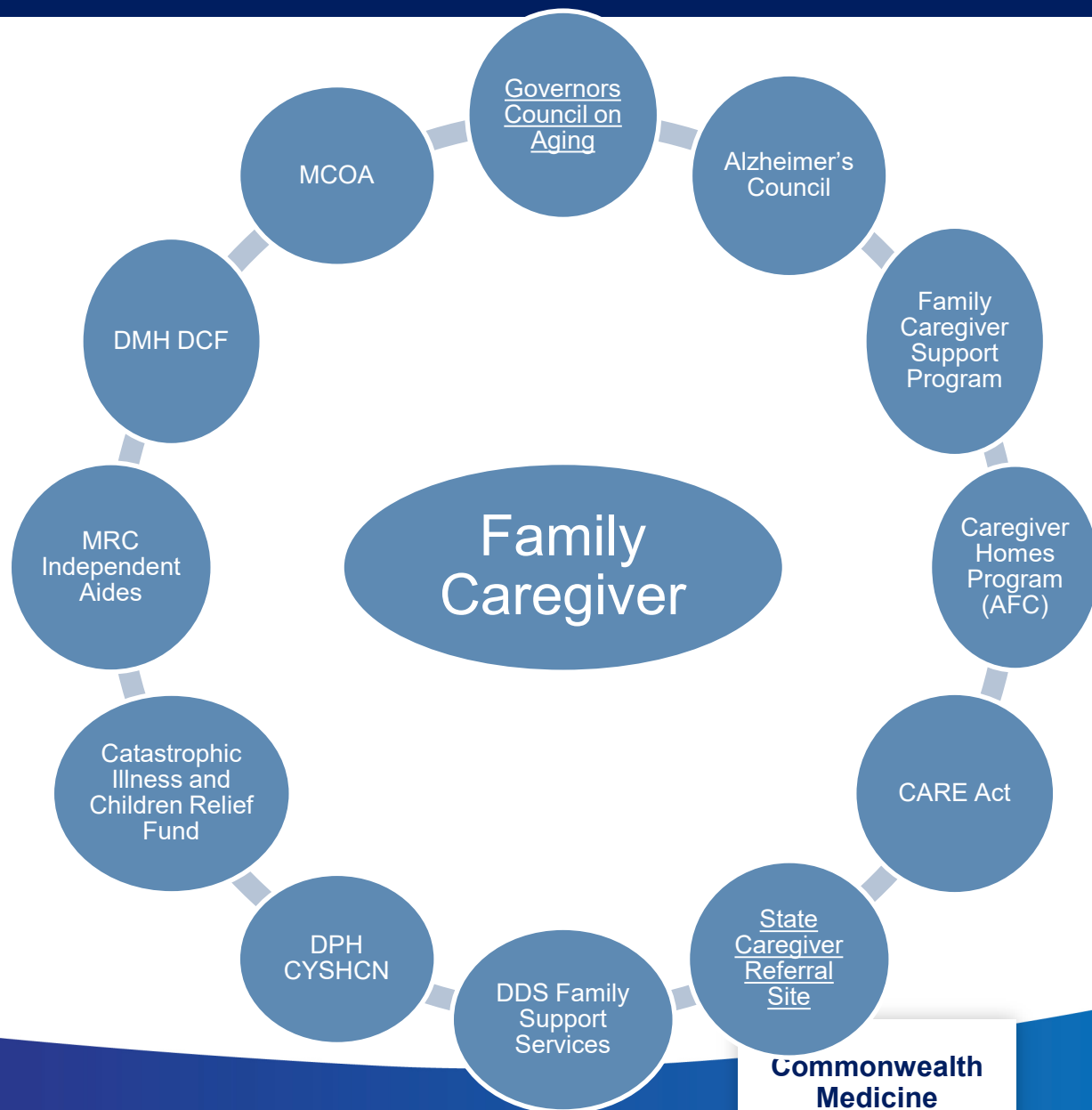
Amy Nazaire, Principal Investigator



Massachusetts Family Caregiver Programs

Ongoing challenges include the caregiver attempting to navigate a statewide system of services where:

- Programs work in isolation of one another; limitations to sharing of information, data, and services.
- Eligibility and persons eligible for services varies across programs
- Definitions differ across programs
- Funding and access to services is limited



Preview of Module



Welcome! You can start the online module by clicking "Start Module" above or clicking on the first lesson below.

- WHAT IS "RESPITE"
 - Introduction
 - Definition of Respite
 - Your experience
- WHY DOES RESPITE MATTER?
 - Caregiver Perspective video
- WHAT TYPES OF RESPITE CAN HELP FAMILIES
 - State agency programs
 - No Wrong Door
- WHAT CAN CARE COORDINATORS DO?
 - Questions to Ask Families
 - Putting it into Practice
- CONCLUSION

MA Family Caregiver Respite Referral Process Flow (DRAFT)

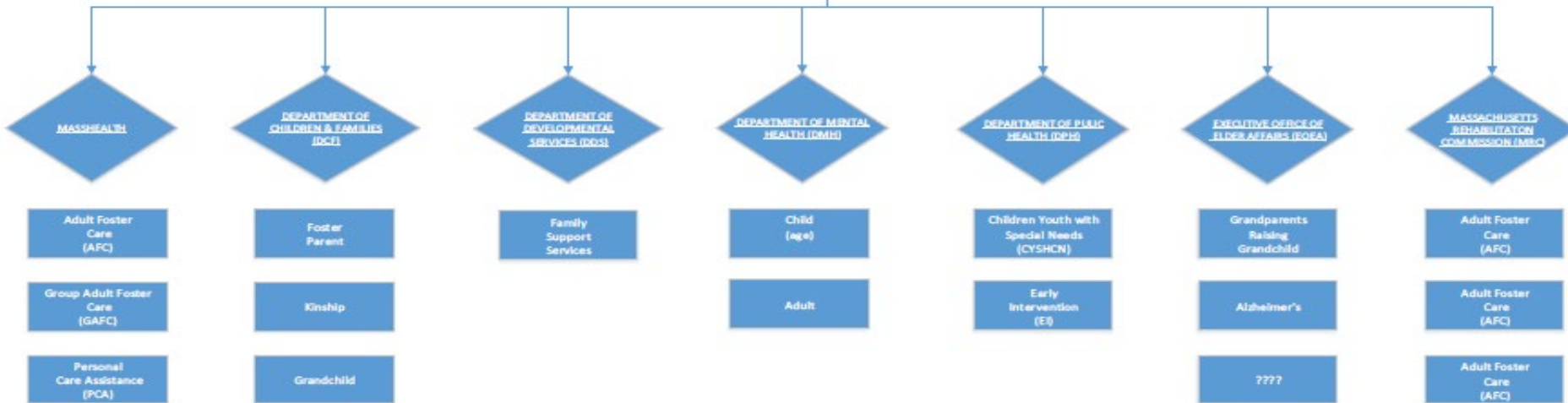
Family Caregiver Helpline Process Flow (DRAFT)

All demographic data:
Reason for the Call
Relationship to person seeking services
Name
Age
Phone
Email
City/ZIP

- Is this the first time you are seeking respite service for (yourself / your loved one)?
- What is the age of your loved one / person that you care for?
- Are you seeking respite specifically for something that is planned, like regularly schedule break(s); specific event / outing; upcoming medical procedure?
OR
- Do you need respite for an emergency where you are not able to provide care like an illness, stress, move, death, etc.?
- Are you or the person you care for receiving any services from community-based agencies or organizations?
o If Yes, Have you asked for available respite services from these agencies?

Where?
UNSURE / NONE

What state agency is your loved one currently receiving services from?



Confidential for planning purposes only