

**Improving  
Hispanic Family  
Caregiver  
Projects:  
Identifying How  
Unique Barriers and  
Cultural Values  
Influence Service  
Utilization and  
Caregiver Roles**

---



MAY 2022

---

Boise State University  
Center for the Study of Aging

Authored by: Adrian Rodriguez, BAPH, CHES<sup>®</sup>.,  
Taylor Neher, DrPH(c), MPH., Sarah E. Toevs,  
PhD



# **Successes and Barriers Identified by Public Health Professionals Engaging Hispanic Communities**

## **Findings from the literature and interviews with professionals**

### **Accepted for publication in the Journal of Latinx Psychology**

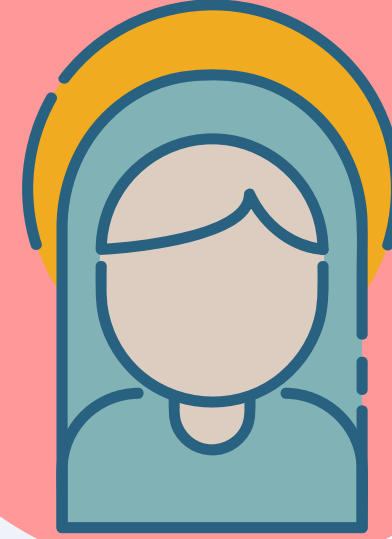


**INFLUENCES  
OF SERVICE  
UTILIZATION**

**Familismo**



**Marianismo**



**Machismo**



**Personalismo**



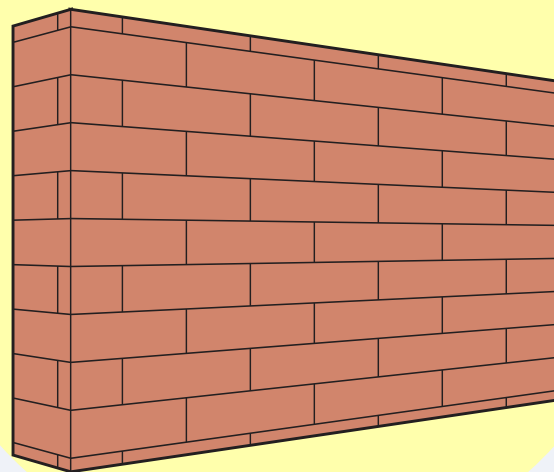
**Respeto**



**Dignidad**



**Barriers**



# RECOMMENDATIONS & APPLICATION

