

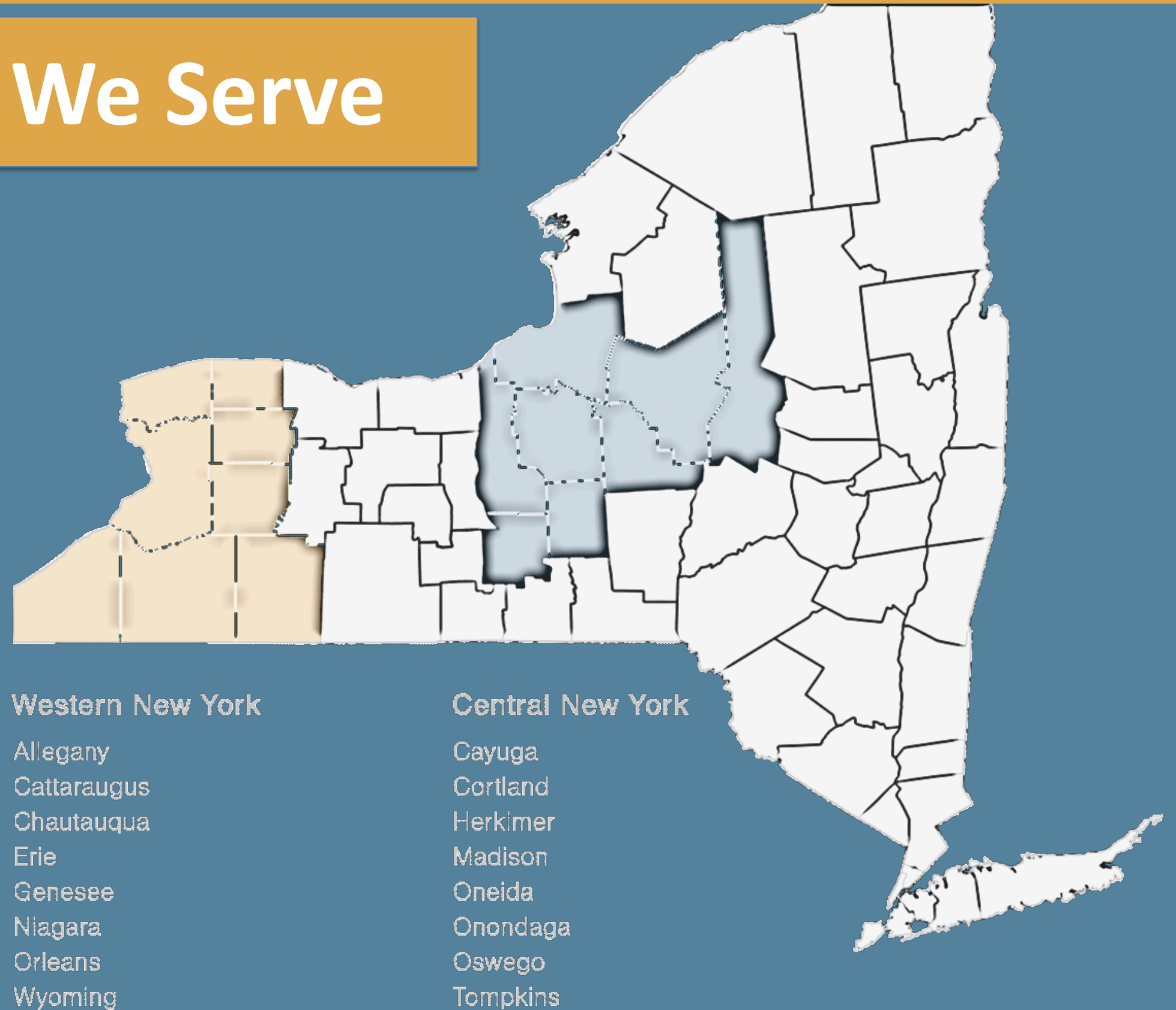
# Philanthropy's Role in Advancing and Using Respite Research to Address the Diverse Needs of Family Caregivers

October 30, 2024  
Ken Genewick, MBA  
Vice President of Programs



## Our History and Where We Serve

- Founded in 2002
- Serve 16 counties in WNY and CNY



**Vision: A healthy central and western New York where racial and socioeconomic equity are prioritized so all people can reach their full potential and achieve equitable health outcomes.**

**Long-term goals in support of vision:**

**Goal 1:** Individual well-being is promoted and addressed for both children and older adults

**Goal 2:** Community-based organizations and health systems are collaborative and sustainable

**Goal 3:** Racial and socioeconomic equity are prioritized and all people are served by trusted, unbiased, high-quality care

## Strategies to pursue vision

- Program development
- Grantmaking
- Community partnerships and convenings
- Advocacy

## Equity Considerations

- Long-term and rigorous commitment needed, based in the principles of racial and socioeconomic equity
- Efforts include:
  - Engaging with, listening to and learning from experts and leaders in racial and socioeconomic health equity;
  - Proactively building new relationships with grassroots organizations that may have previously faced barriers to working with the philanthropic community;
  - Using our platform to advocate for positive change and challenge policies that perpetuate unfair systems and inequities in health care.

# Our Journey Toward Health Equity



The Health Foundation for Western & Central New York is an independent private foundation that advocates for continuous improvement in health and health care for the people and communities of western and central New York, with a focus on older adults, young children impacted by poverty, and community health capacity. The following is a high-level summary of our efforts to center racial and socioeconomic health equity in recent years.

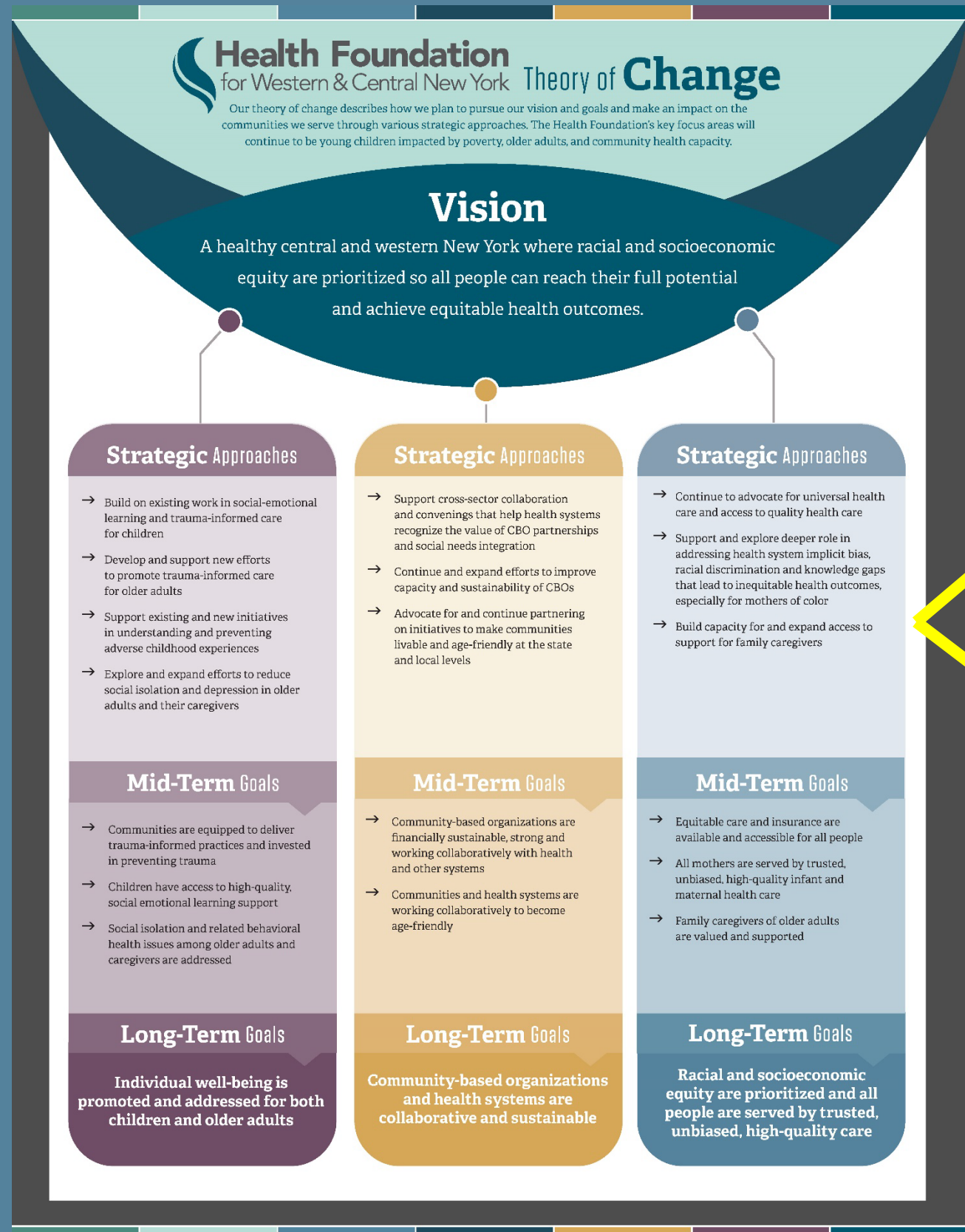
## EARLY EFFORTS



Scan to read our full equity journey report.

A true commitment to antiracism and justice will require philanthropic organizations to transform how they partner with nonprofit organizations and the community. At the Health Foundation for Western & Central New York, we recognize and value this challenge. Since the launch of our vision and strategic plan for health equity, we have been striving to evolve as a foundation, learn from the communities we serve, and build on our progress.

# Our Theory of Change



## Strategic Approaches

- Continue to advocate for universal health care and access to quality health care
- Support and explore deeper role in addressing health system implicit bias, racial discrimination and knowledge gaps that lead to inequitable health outcomes, especially for mothers of color
- Build capacity for and expand access to support for family caregivers

## Mid-Term Goals

- Equitable care and insurance are available and accessible for all people
- All mothers are served by trusted, unbiased, high-quality infant and maternal health care
- Family caregivers of older adults are valued and supported

## Long-Term Goals

Racial and socioeconomic equity are prioritized and all people are served by trusted, unbiased, high-quality care

## “Family Caregivers of Older Adults are Valued and Supported”

- Previous support for family caregivers as part of overall body of work focusing on older adults
- Developed understanding of need
- Family caregivers became strategic focus



## Work Done to Address Goal

- Co-sponsored *Families Caring for an Aging America* report
- Supported scan of caregiver support programs
- Joined Respite Research Consortium and study, *Building Evidence for Respite*
- Provided caregiver grant support

## Current Work and Moving Forward

- Supporting initiatives that elevate and address the needs of family caregivers at local, state and national levels
- Build capacity for family caregiver support in the general community
- Focus on expanding access to family caregiver respite and supports

## Respite for Family Caregivers

- Exhale- The Family Caregiver Initiative
- West Falls Center for the Arts Musical Memories Café
  - \* 2024 ARCH Innovative and Exemplary Respite Program!
- Exhale WNY Memory Café Collective



Importance of advancing and using  
research to address the diverse needs  
of family caregivers

Thank you!

Ken Genewick

[kgenewick@hfwcny.org](mailto:kgenewick@hfwcny.org)

[www.hfwcny.org](http://www.hfwcny.org)

